

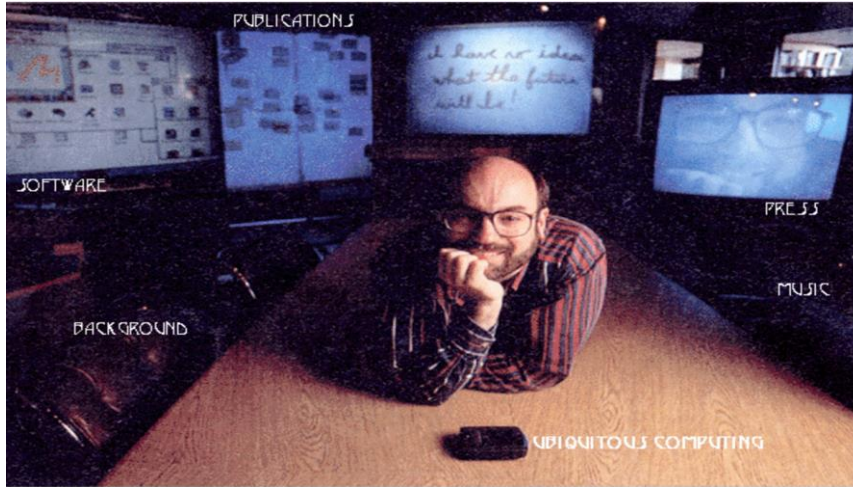
# How Does IoT Fit Into Your 70-year Old Factory Floor?

Supreet Oberoi

[supreet.oberoi@oracle.com](mailto:supreet.oberoi@oracle.com)

VP, IoT & Big Data

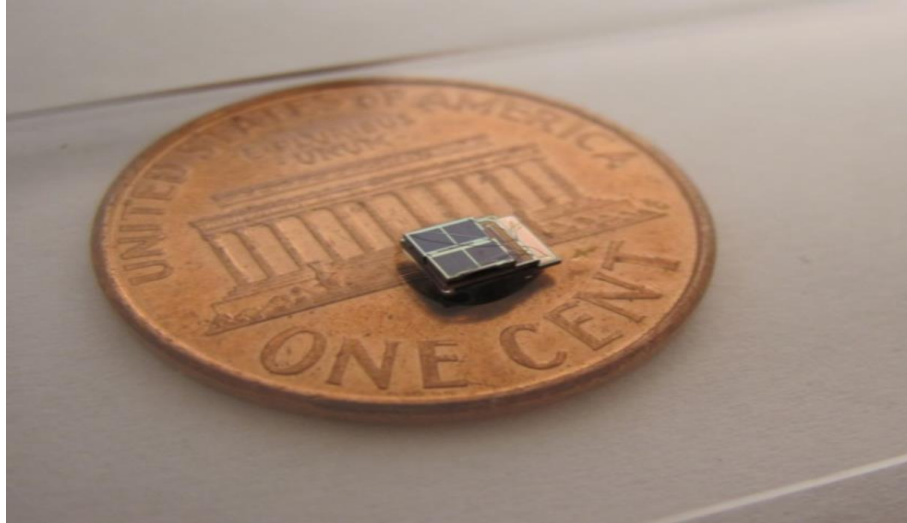
# Enterprises Are Ready To Engage IoT



*“The most profound technologies are those that disappear. They weave themselves into the fabric of everyday life until they are indistinguishable from it.”*

Mark Weiser, **1988**

# Enterprises Are Ready To Engage IoT



*“We review the key elements of the emergent technology of “Smart Dust” and outline the research challenges they present to the mobile networking and systems community,.. “*

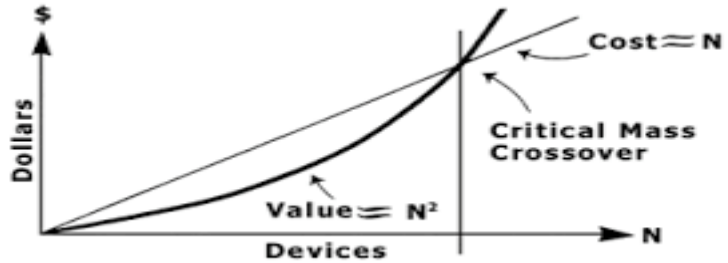


# Enterprises Are Ready To Engage IoT



2017

# Lesson #0: Build a Plan For ROI



**Metcalfe's law:** *value of a telecommunications network is proportional to the square of the number of connected users of the system*



*Residents simply sign up for ReachNow service and **pay only as they use the vehicles**. They then pay 41 cents per minute and there's no sign up or annual fee.*

# Lesson #1: Secure Every Touch point



## TRUSTED DEVICES

- Security mechanism provisions and manages trust relationships with devices – uses OAuth2
- Uniquely assigned device identities disallows reuse of security credentials across devices



## NON REPUDIATION

- Enforces authentication prior to communication with any device or enterprise software, enabling proof of origin of data
- Short-lived authentication tokens with configurable expiration time



## SECURITY LIFECYCLE

- Secure, managed state transitions to control access from devices
- Restricts types of IoT Cloud Service operations that device can perform in a given state





## DATA SECURITY

- Transport level security for all communication to ensure data integrity
- Role-based access control to data-at-rest to ensure authorized access to data

# Lesson #2: Reduce Risk With Turnkey Solutions

## Asset Monitoring

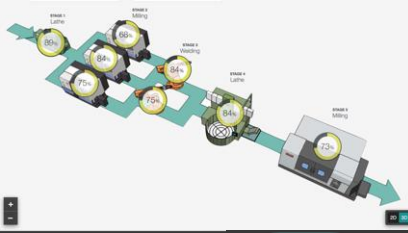



95% Asset Availability

1 Open Incidents

For monitoring assets, their utilization, availability, and data from connected sensors

## Production Monitoring





2% Down

78% In Use

3h to 5h ago

Manufacturing factory floor equipment monitoring and prognostics

## Fleet Monitoring



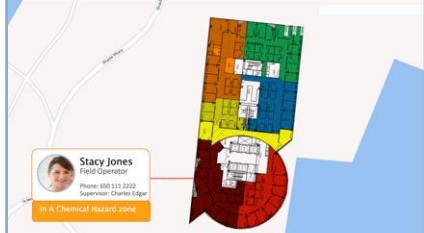

68% On Track

5% Down

3 Driver Alerts

For medium sized business who have fleets of vehicles (trucks, buses, maintenance vehicles, delivery vehicles)

## Connected Worker



21 Over Time

3 Evacuation risks

0% Unsafe Zones

For tracking employees in Mining industry, Engineering and Construction industry



# Lesson #3: Pick A Vendor With A Rich Iot Ecosystem

SI Partners	Connected Worker Smart Factory, Facilities Mgmt. <b>accenture</b>	Fleet Management Smart Service Utilities <b>L&amp;T Infotech</b>	Connected Car Asset Management <b>KPIT</b>	Digital Field Service <b>WIPRO</b> Applying Thought
		Asset Tracking <b>Cognizant</b>	Asset Monitoring, IIC Test Bed <b>TATA</b> CONSULTANCY SERVICES	Fleet Management <b>LOCHBRIDGE</b>
			Smart Factory <b>NEC</b>	Remote Equipment Monitoring <b>Ephlux</b>
				Smart Logistics <b>Hitachi Consulting</b>

Real-time OS & Device Management <b>WIND intel</b>	OPC UA Industrial Connectivity <b>MatrikonOPC</b>	Building / Industrial Connectivity <b>TRIDIUM Honeywell</b>		
Industrial Gateways <b>janzttec</b> Industrial Computing Architecture	Industrial Gateways <b>EUROTECH</b>	Industrial Gateways and Sensors <b>ADVANTECH mobica</b> Enabling an Intelligent Planet	Industrial Automation <b>Rexroth Bosch Group</b>	
IoT OS & Device Management <b>ZENTRI</b>	IoT Security <b>gemalto</b> security to be free	Smart City Gateway <b>Aricent</b>	Wireless Connectivity <b>cisco Jasper</b>	Device and Technology Partners

# Lesson #4: Reduce TCO for IoT Projects

## Integration Cloud Service

- Rapid integration with wide range of cloud and on-premise applications
- Protocol conversions (e.g., RESTful to SOAP) and data transformations (e.g., JSON to XML)



## Storage Cloud Service

- Secure, scalable, long-term storage of IoT data
- Integrate data for processing in big data analytics (Big Data Discovery Cloud Service) and big data processing (Big Data Cloud Service)



## Mobile Cloud Service

- New enterprise services/APIs for mobile consumption
- API abstractions for external consumption



## BI & Data Visualization Cloud Services

- Extend real-time analytics with powerful BI applications for agile analysis
- Create compelling data visualizations for fluid, interactive insights



ORACLE®