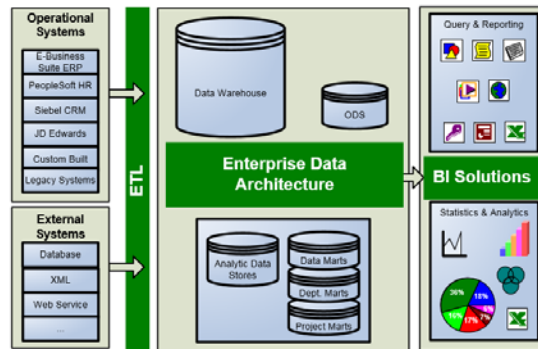
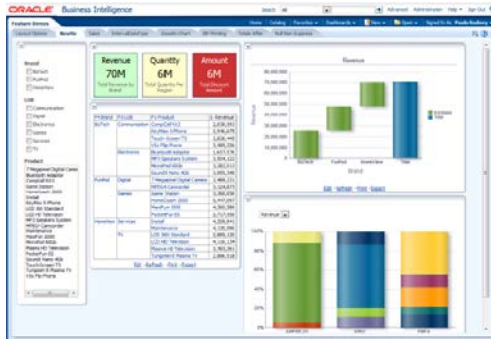


Oracle BI Cloud Service



**Oracle BI Cloud Service
for
Departmental Data Mart
or
Enterprise Data Warehouse?**

BIWA Summit – January 2017



Agenda

BICS: For Departmental Data Mart or Enterprise Data Warehouse

Introduction & AST Company Overview

BICS Overview

BICS Data Storage Options

BICS Performance Options

Customer Use Cases

Consensus and Debate

Pre-Concert Events

Matthew Vranicar



Matthew Vranicar

Senior Vice President, Business Intelligence, AST Corporation

- Joined AST in 2015 to aid in strategic growth initiatives
- Tasked with leading AST's BI practice and expanding into Big Data
- 30 years of experience in the Oracle and BI consulting arena
- Founded and led growth of BI consulting firm Piocon Technologies, sold to Rolta in 2008
- Previous roles include President and Executive VP of Rolta Americas, CEO of Piocon, Board member of IOUG
- Board member of BIWA – the Oracle BI, Warehousing & Analytics SIG
- Started career with Oracle in 1986 as one of the first 100 Oracle Consultants



Specialized. Recognized. Preferred.

OUR SERVICES	ORACLE PARTNERSHIP	ORACLE SPECIALIZED
<ul style="list-style-type: none"> ▶ Enterprise Resource Planning ▶ Business Intelligence ▶ EPM-Hyperion ▶ Middleware ▶ Managed Services ▶ CRM/CX ▶ Education / Oracle University ▶ Project Advisory Services 	<ul style="list-style-type: none"> ▶ Oracle Platinum Partner ▶ Pillar Partner ▶ Certified Cloud CX Reseller ▶ Oracle Cloud Marketplace ▶ Oracle University Approved Education Center ▶ Oracle University Reseller ▶ Oracle Accelerator Implementer ▶ Oracle Managed Cloud Services Implementer ▶ Small Business Strategy Council ▶ Oracle Advanced Partner Support Program 	<ul style="list-style-type: none"> ▶ Public Sector ▶ EBS Human Capital Management ▶ EBS Financial Management ▶ EBS Supply Chain Management ▶ BI Applications ▶ BI Foundation ▶ Oracle CX Certified ▶ Service Oriented Architecture ▶ Utilities ▶ Travel & Transportation <ul style="list-style-type: none"> ▶ Education & Research ▶ Application Development Framework 11g ▶ WebCenter Content 11g ▶ Access Management Suite Plus 11g ▶ Hyperion Planning 11 ▶ Database 11g ▶ Hyperion Financial Management 11 ▶ Essbase

4 Time Oracle Excellence Award Winner

2014 Chicago Tribune Top 100 Workplaces

2012, 2013, 2014 Inc. 5000 Fastest Growing Companies

2012 Best & Brightest Companies to Work For

2011 Inc. Top Small Company Workplaces



AST BI SERVICES

BI · DATA WAREHOUSING · BIG DATA · ANALYTICS



Dashboards & Reporting

- BI Cloud Service (BICS)
- OBIEE
- BI Publisher
- Mobile BI
- Data Visualization



Pre-Built Applications

- Oracle ERP Analytics
- Oracle CRM Analytics
- AST Grants Analytics
- AST ASTRA



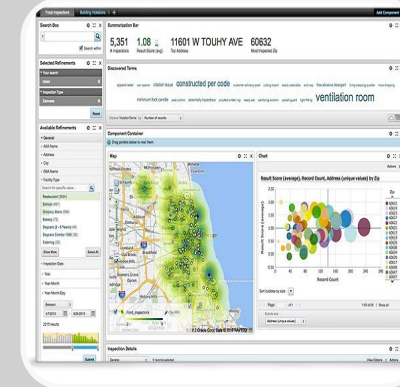
Data Warehouse & Integration

- Data Management
- ETL / ELT
- ODI
- GoldenGate
- Informatica



Enterprise Data Management

- Cloud Data Management
- Master Data Management
- Enterprise Data Quality
- DRM



Big Data & Advanced Analytics

- Big Data Discovery
- Big Data Preparation
- Big Data Visualization



Cloud & Engineered Platforms

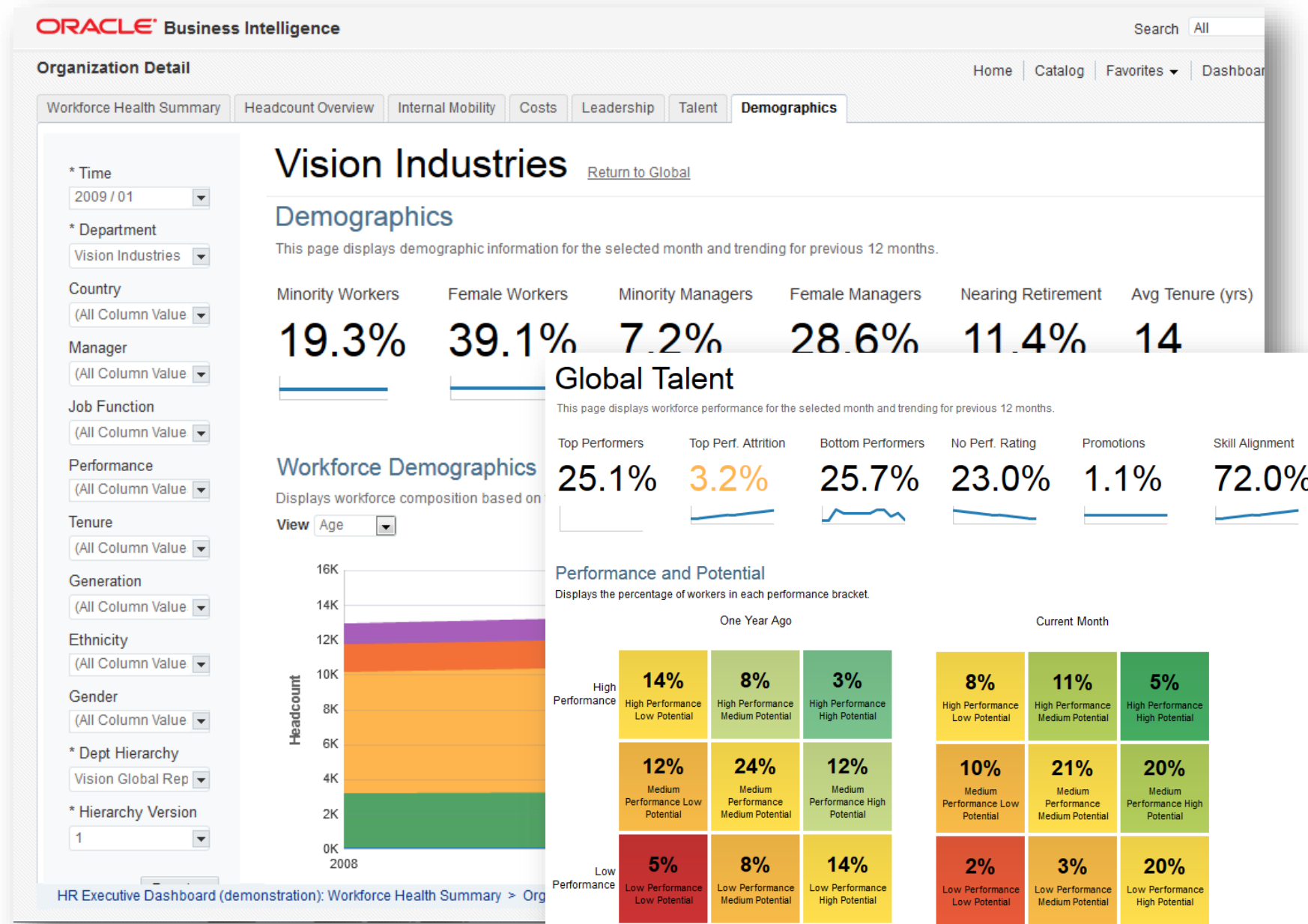
- Cloud (PaaS)
- Big Data Appliance
- Exalytics
- Exadata
- Exalogic

BICS Overview

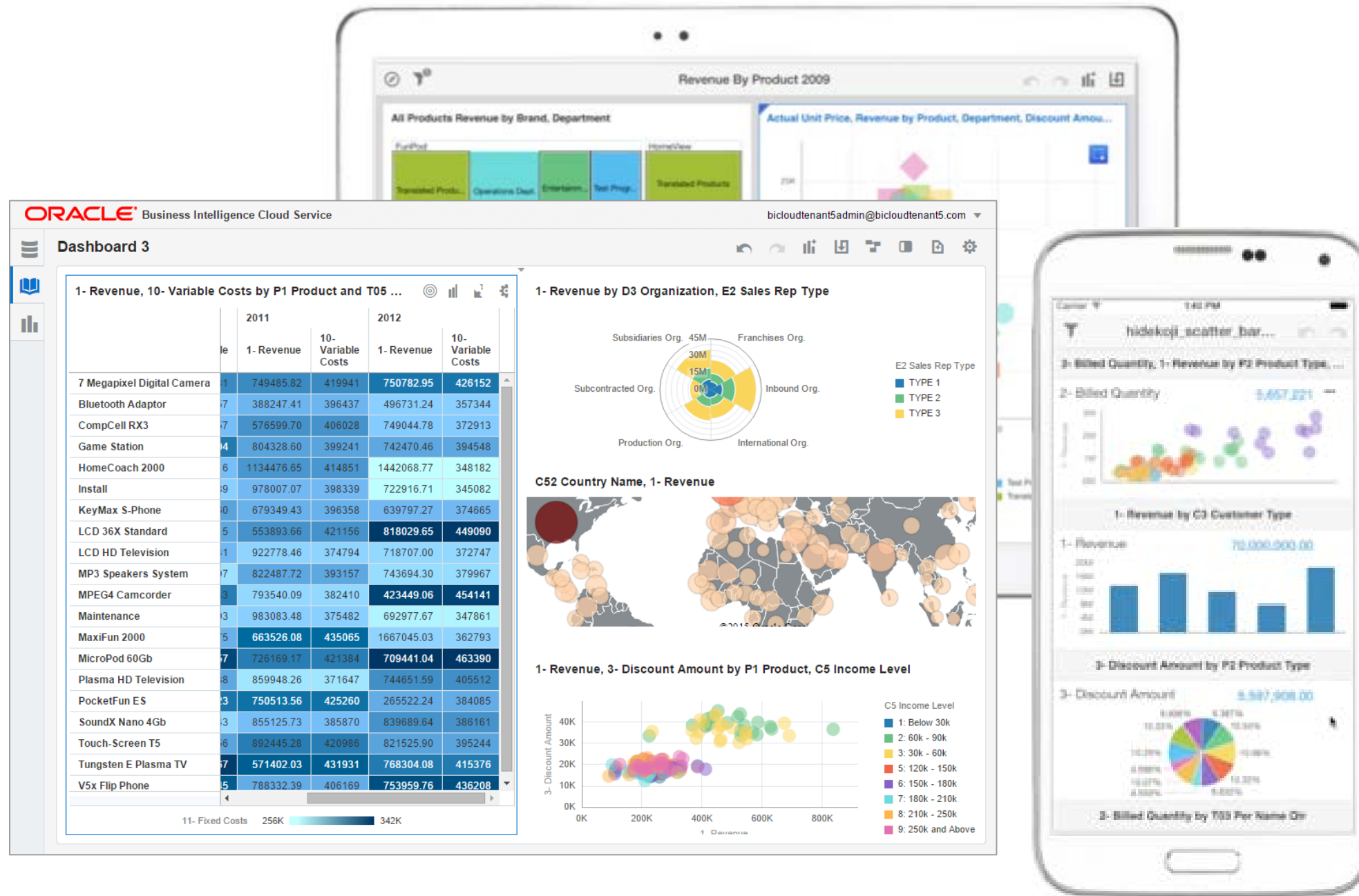
- Fully functional BI Cloud Service
 - Dashboards, Reports, Analytics, Visualizations
 - Data modeling using standard Oracle BI framework
- Database still required, either:
 - Schema as a Service – BIS50
 - *NEW – Exadata Pluggable Option*
 - Database as a Service – Database Cloud Service (DBCS)
 - On-Premise database – via Remote Database Connectivity (RDC)
 - Oracle SaaS database – Sales, Service, Marketing, ERP, HR, etc.



Fully Functional Answers & Dashboards

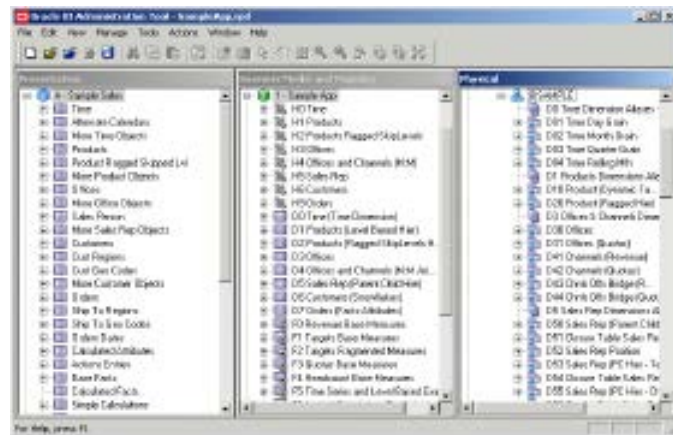


Fully Functional Data Visualization



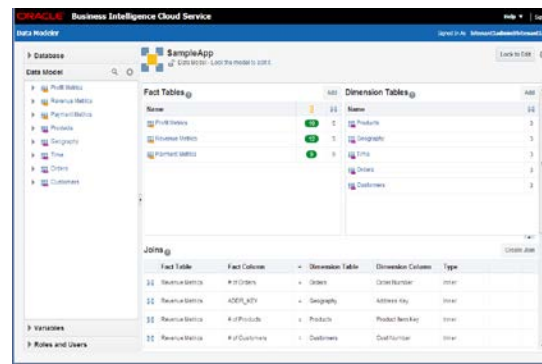
- Guidance
 - Visual grammar
 - Keyword search
 - Pattern brushing
- Richness
 - Viz. Library
 - Advanced Trellising
 - Streamlined Dashboard
- Full Mobile Authoring

Fully Functional Data Modeling



OBIEE Admin Tool

On-Premises Applications



Cloud Data Modeler

Fully Cloud Based
Multi-User

No Modeling

Auto-modeling

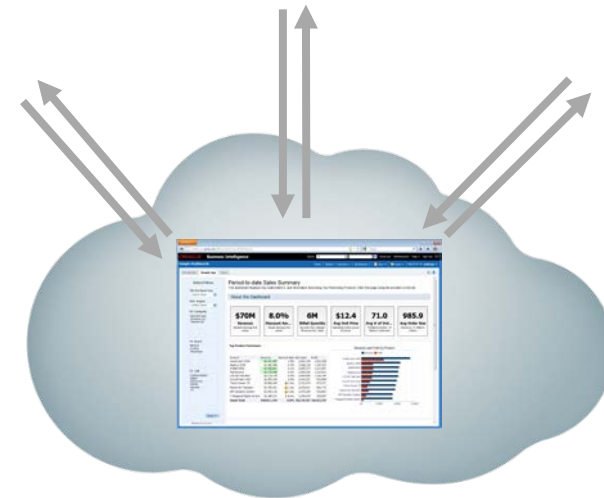
Schema Introspection

Data Blending

Database Access Options



ETL
REST API
SQL*NET



Data Sync
On-premise data sources
Web services

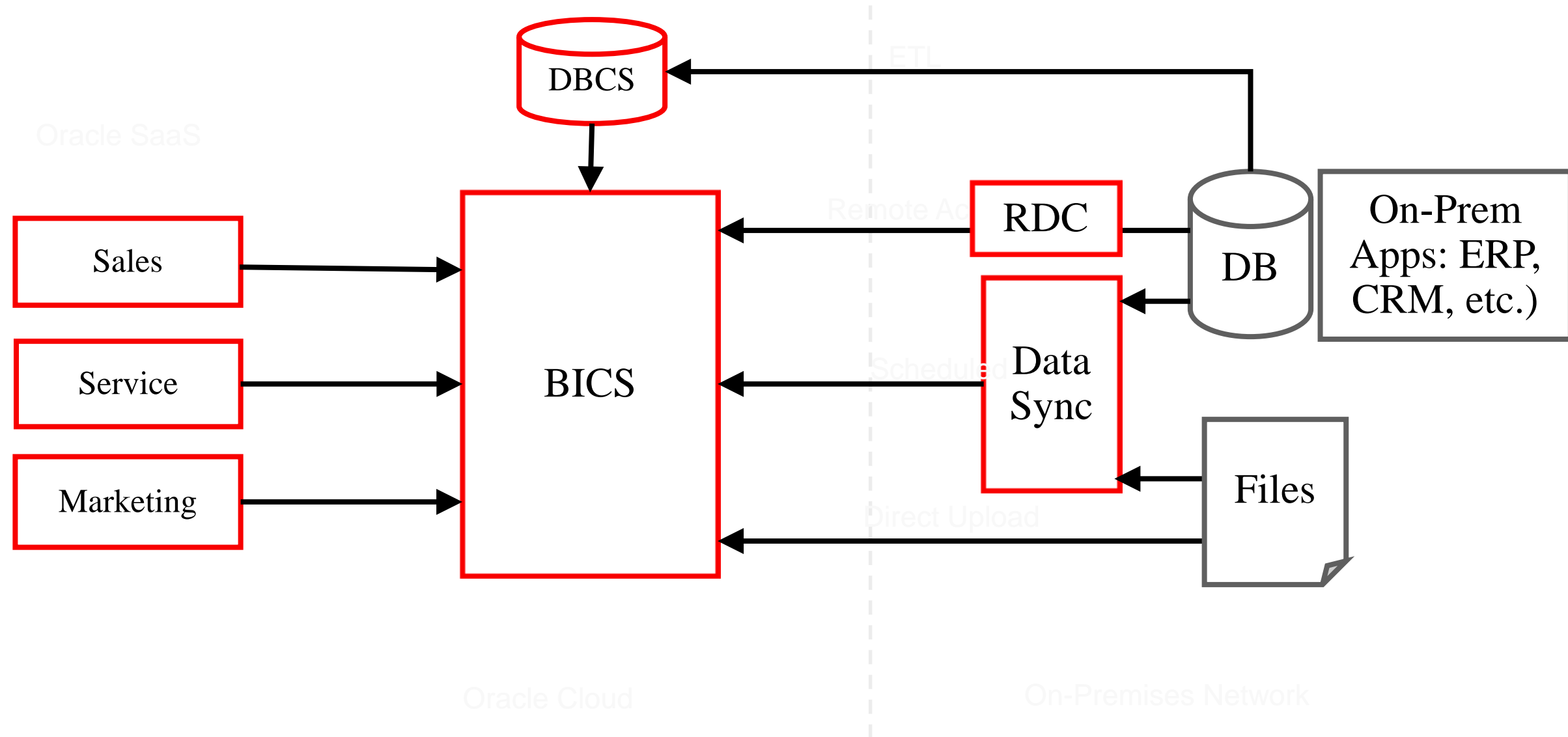


Import
End-user upload to
Oracle Cloud Database
*Schema or Database
Service*



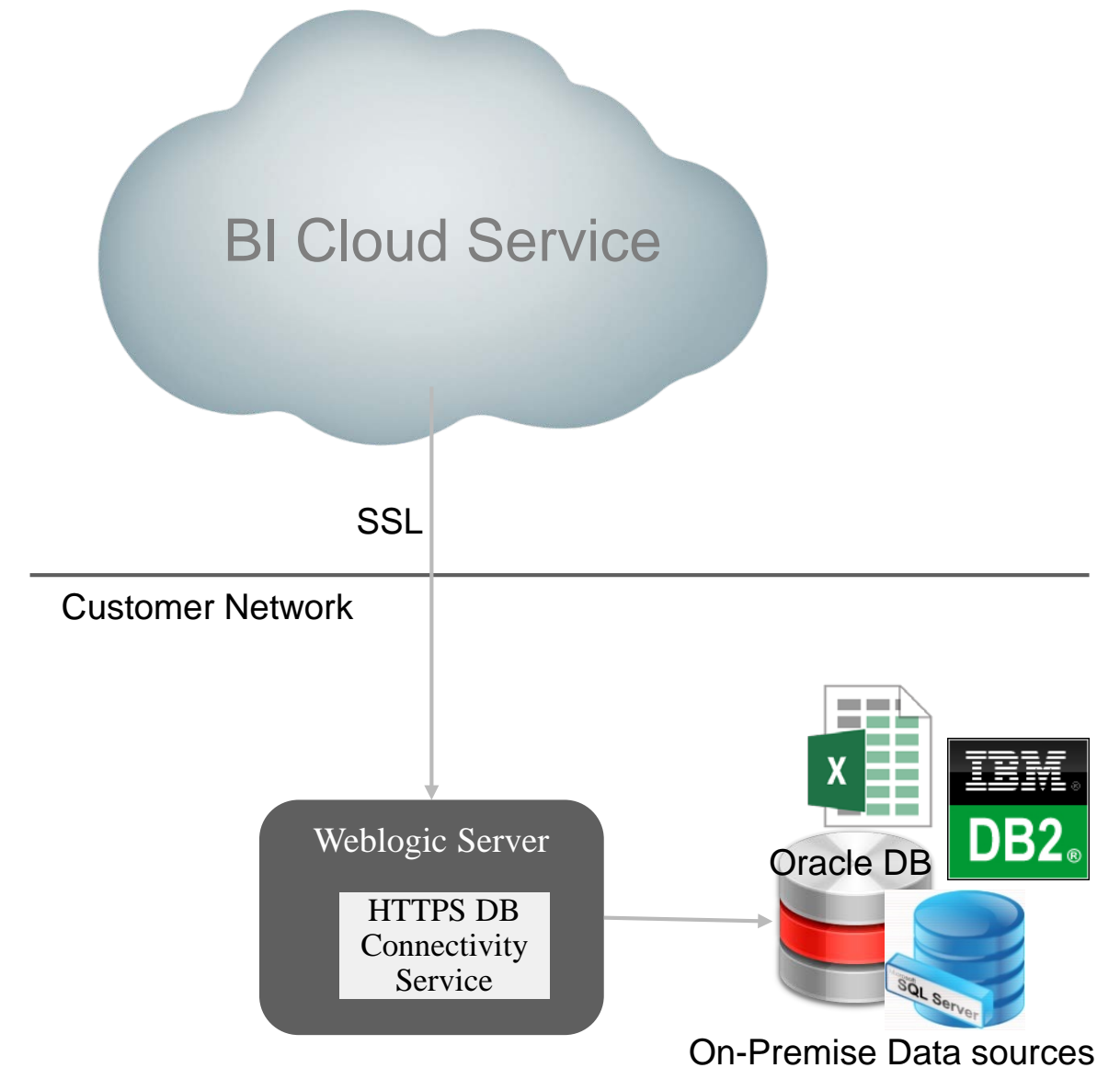
Direct Query
Direct query to
on-premise databases

Database Access Options Architecture

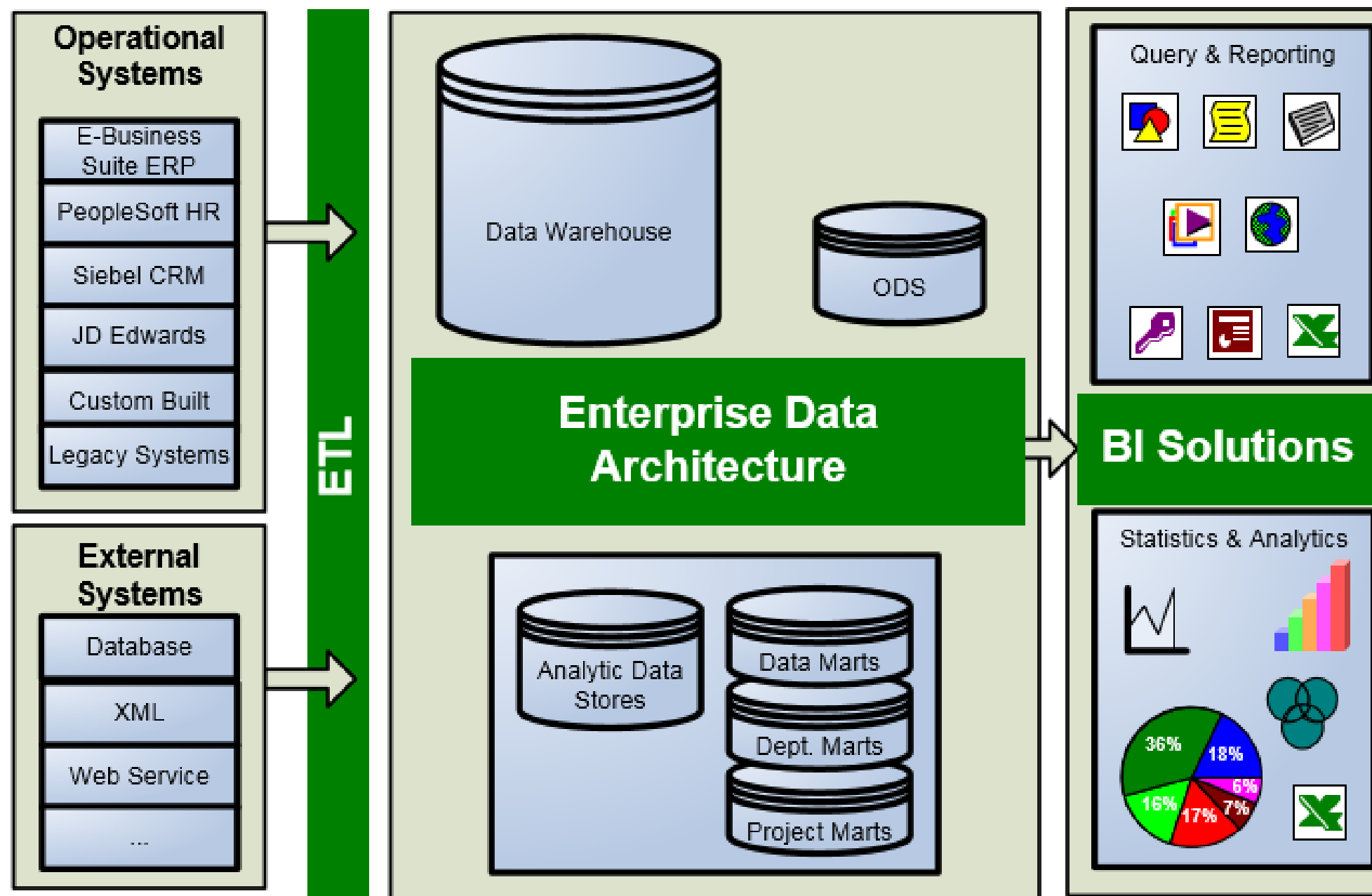


BICS Remote Data Connector

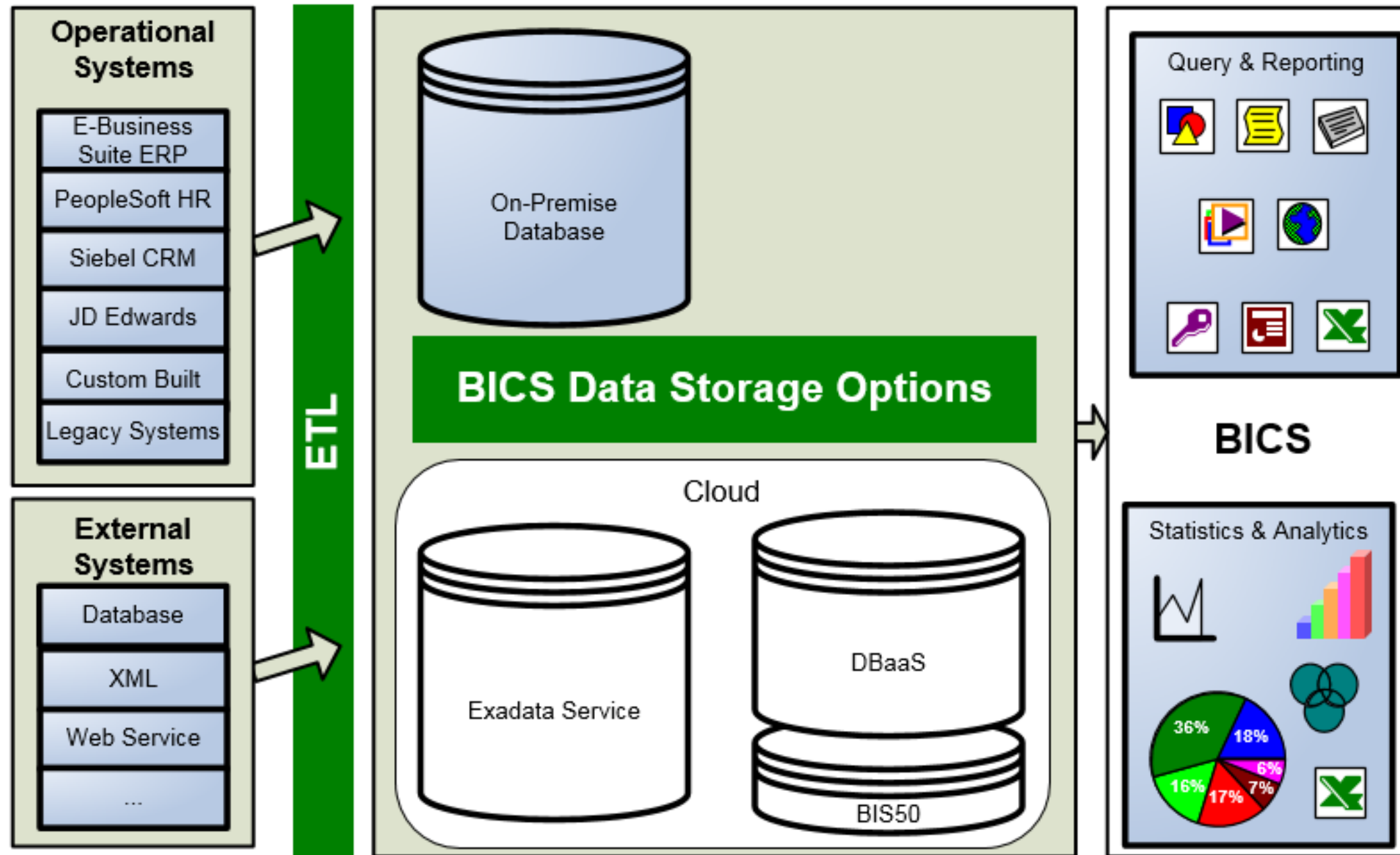
- Enables direct query to on-premises accessible data sources
 - Databases
 - Files
- Secure SSL access with certificate validation
- Requires opening firewall port
- Optimized for WAN transport



Typical Data Warehouse / Mart



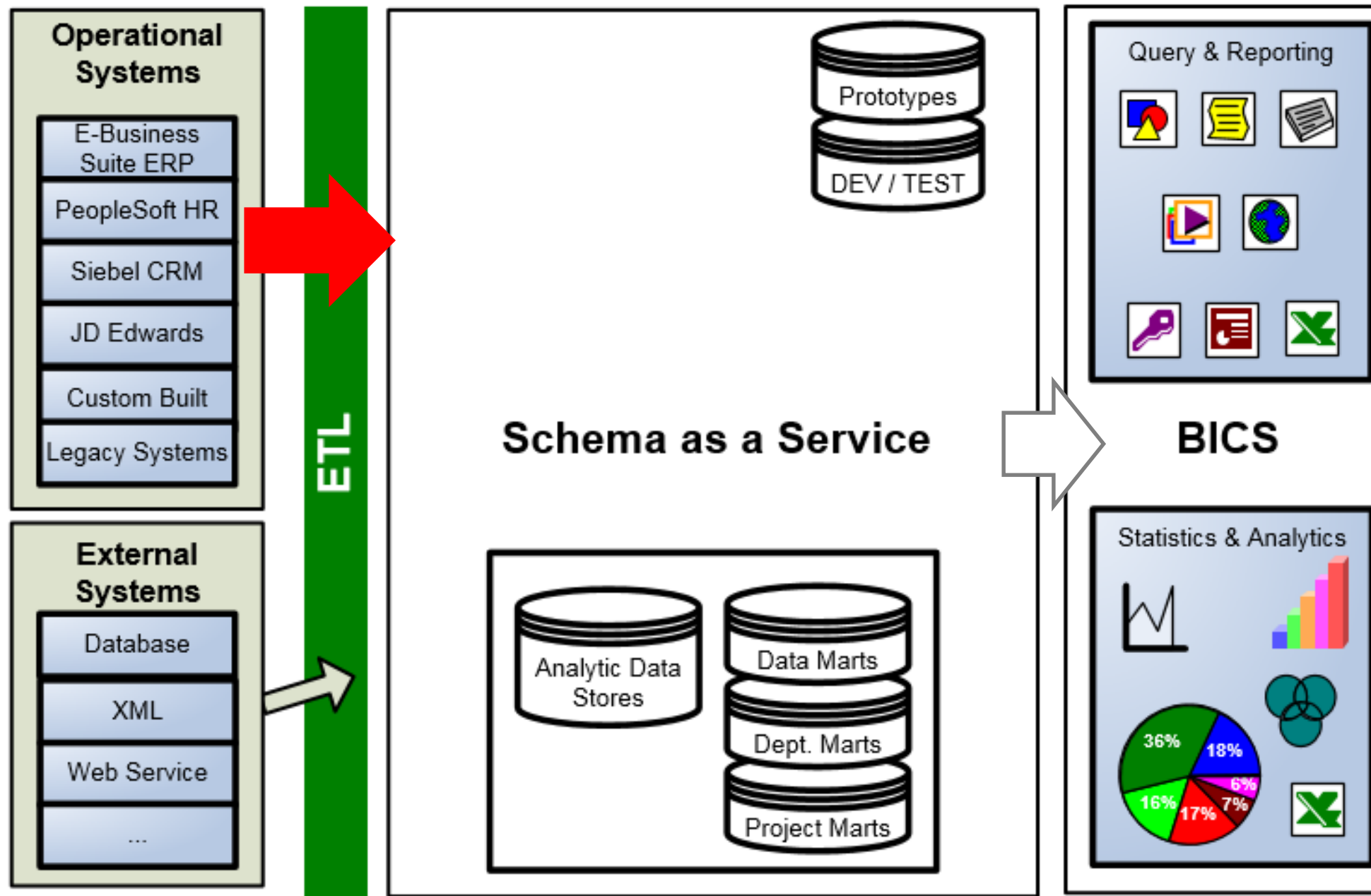
Oracle BICS Data Storage Options



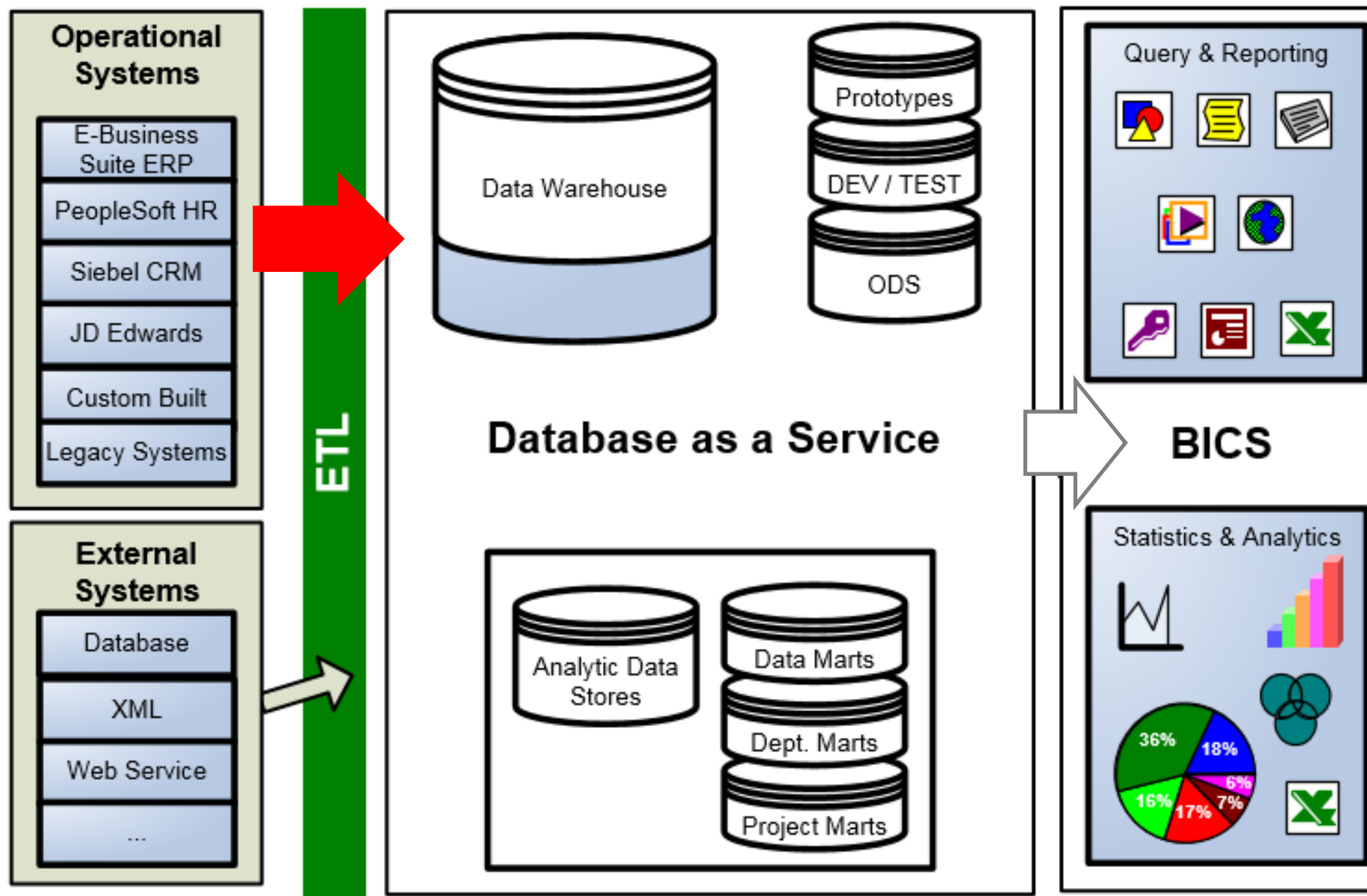
BICS Data Storage Options

- Schema as a Service – aka BIS50
 - Most basic storage option, but very limited
 - Single schema only
 - 50GB storage maximum
 - 300GB per month data transfer
- *New Exadata Pluggable DB – full feature starter DB for BICS*
- Database as a Service
 - Many options – metered or non-metered, server or virtualized
 - 4 Performance levels – Standard, Enterprise, High, Extreme
- Exadata as a Service
 - Metered vs non-metered; Quarter, Half, or Full Rack; Additional OCPU pairs
- Remote Database Connectivity (RDC)
 - To On-Premise or Hosted Databases

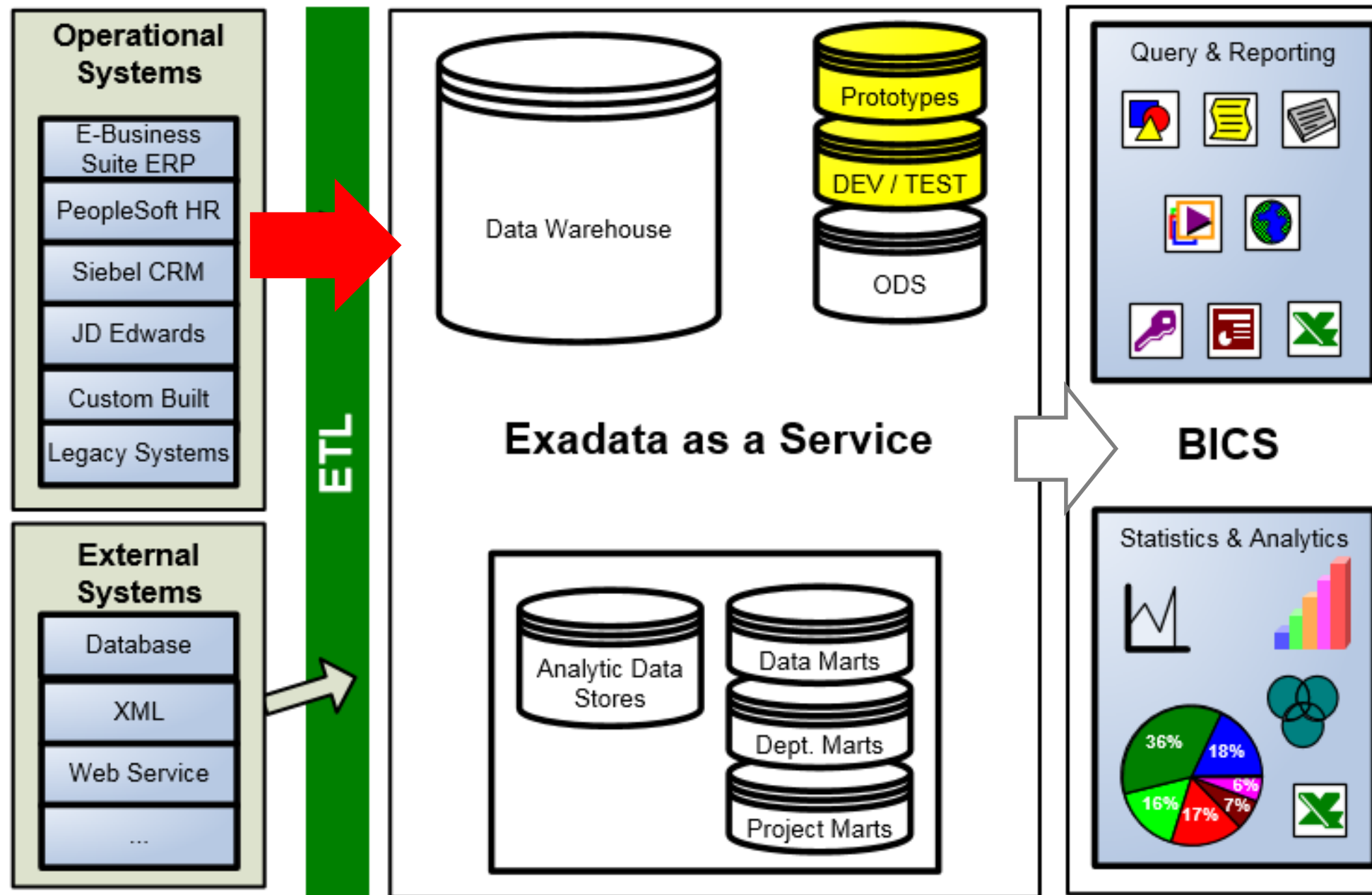
Schema as a Service Uses



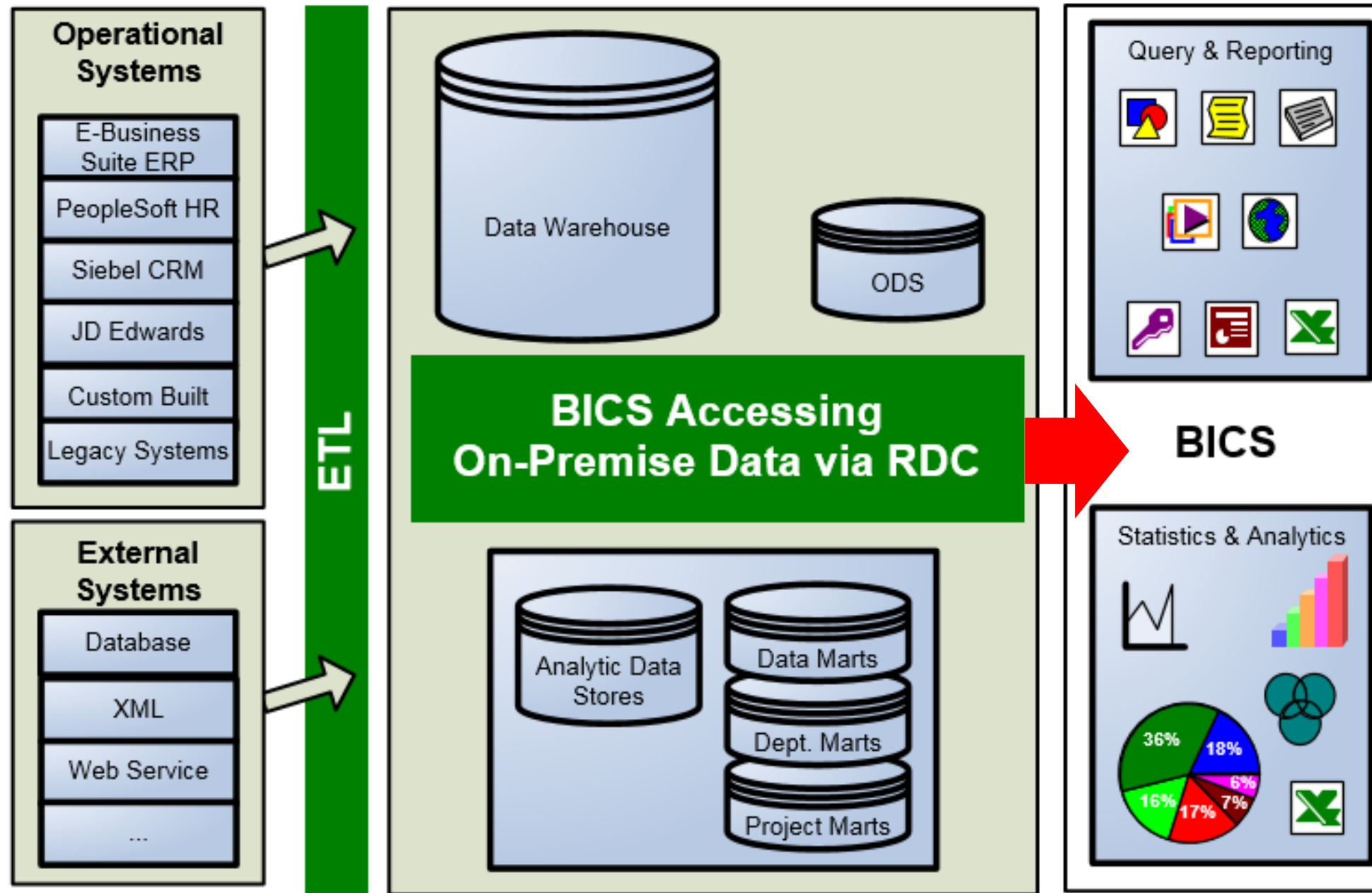
Database as a Service Uses



Exadata as a Service Uses



On-Premise Data via RDC

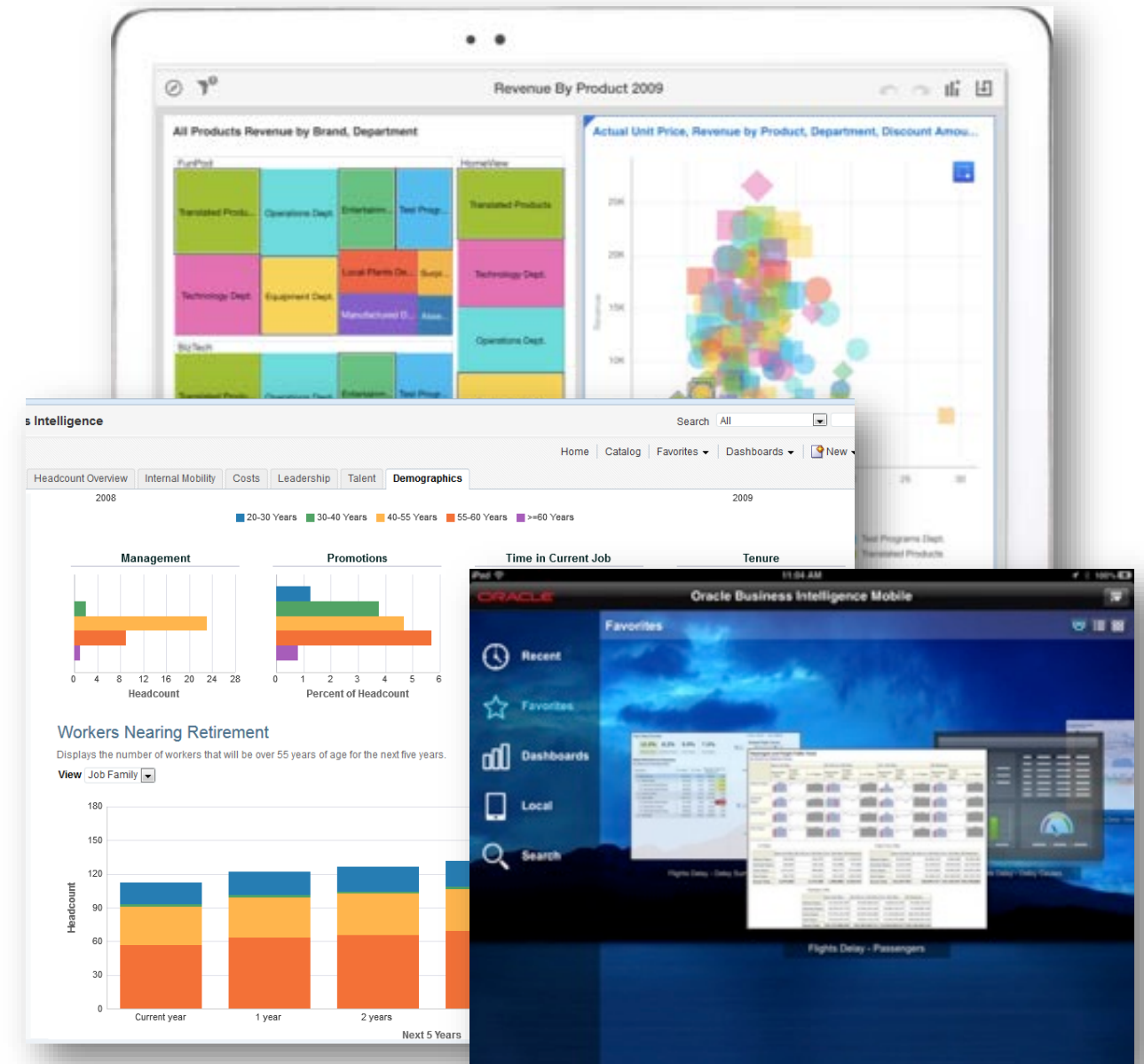


Summary of Considerations

- Schema as a Service
 - Lowest cost option, but maxes out at 50GB
 - Truly limited to Departmental Data Mart or for Prototype/Dev/Test
- Database as a Service *(Or New Exadata Pluggable)*
 - Many configurations and pricing options to house various data and usage loads
 - Flexible enough to meet many of your needs
 - From Prototyping, to Dev/Test, to Production strength
- Exadata Service – Industrial strength / Industrial priced
 - Engineered Systems and all the Performance & Scalability they provide
- Remote Database Connectivity (RDC)
 - Leverage existing On-Premise or Hosted Database investments
 - But you manage the Data Warehouse machines and databases

BICS Top Use Cases

- Agile Enterprise BI Platform
 - New Applications in weeks
- Domain Based Applications
 - Built by SME's / Partners
- Move Enterprise BI to Cloud
 - Phased rollout
 - Start with Dev/Test
 - Next Targeted Use Cases
- Go All In
 - BICS for Enterprise Analytics
 - Enterprise DW on Database Service



Platform for Agile Application Development



- Deliver quick, pointed apps
 - Convert manual processes
 - Enable mobile
 - Reach users outside enterprise (partners, customers)
- Benefits
 - Quick time to value
 - Mobile enabled
 - IT managed
 - Scale on demand

Actual BICS Use Cases

- HR Analytics for 750 Managers in 30 days
 - Hi-Tech firm integrates Taleo and EBS Financials
 - Started as Prototype with another tool
- Financial Analytics for Business Users
 - Multiple ERPs, Planning, data files and more
 - Complete user-based analytics
- Self-service & Mobile Analytics for Executives
 - Users manage data migration & business rules
 - No dependencies on other parties

Additional BICS Use Cases

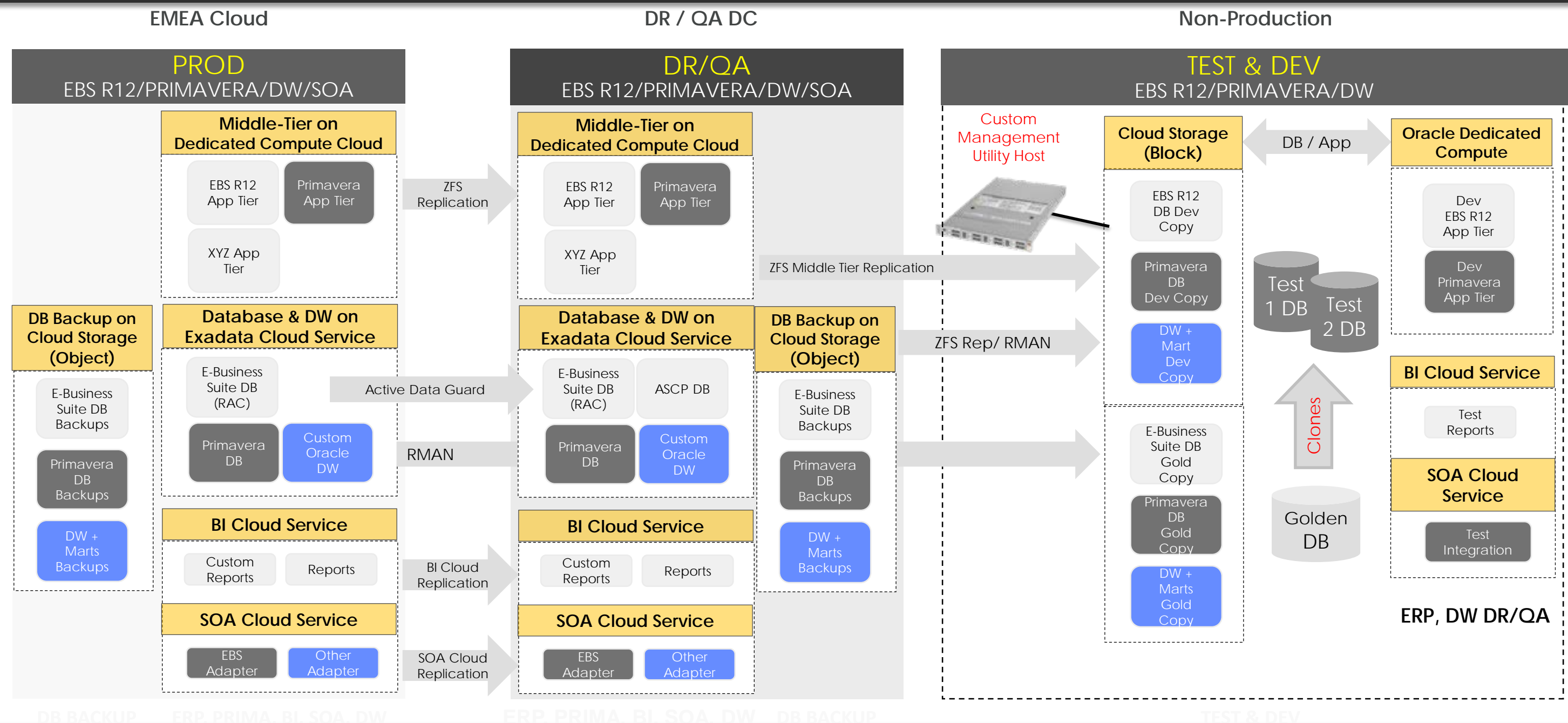
- Replace Discoverer with BICS
 - Use as opportunity to rationalize reporting environment
 - Add self-service Visualization capabilities
 - Training and empowerment for business users
- Platform for Innovation
 - Prototype new analytic and reporting needs
 - Easy to scale up/down as required
 - Turn on/off the lights when arriving/leaving

Enterprise BI in the Cloud



- Implement a Cloud Strategy
 - Larger than BI
 - Use Oracle PaaS/SaaS
- Benefits
 - Increased independence and modularity
 - Increased agility
 - Opportunity to dis-entangle various departmental applications
 - Scale on demand

Cloud - ERP, PLM, SCM, SOA, DW, & Analytics on Oracle IaaS & PaaS



Consensus and Debate



Party On!

PLEASE JOIN US FOR A FUN NIGHT OF
TAPAS & ORGANIC BREWS!

AST CORPORATION WOULD BE DELIGHTED TO HAVE YOU JOIN US AT THE THIRSTYBEAR BREWING COMPANY FOR TAPAS, SAN FRANCISCO'S ONLY PREMIUM HAND-CRAFTED ALES AND LAGERS, SANGRIA & FUN!!!

WEDNESDAY, SEPTEMBER 21, 2016 FROM 5PM - 7PM

THE THIRSTYBEAR BREWING COMPANY
661 HOWARD ST, SAN FRANCISCO, CA

AST WILL PROVIDE UBER TRANSIT FOR GUESTS WHO PREFER RIDING TO AT&T PARK FOR THE ORACLE CUSTOMER APPRECIATION EVENT

PLEASE RSVP TO:
MELISSA SIDER | 630.210.9708 | MSIDER@ASTCORPORATION.COM

IF YOU WISH TO BRING A GUEST, JUST LET US KNOW WHEN YOU RSVP.

AST Corporation Visit us at OpenWorld! Booth # 309 **ORACLE**



Rock On!



Thank You